



LANGSAMREISEN

die Gegenwart entdecken

Pitcairn Accommodation

Legendary Pitcairn Island is known the world over for the welcoming and open-hearted hospitality of its people. When you stay with one of Pitcairn's Accommodation Providers you will have the unique opportunity of experiencing the real everyday lives the people of Pitcairn, sharing their homes, culture, language and lifestyle. It's a great way to get to know what it's truly like living on one of the most remote islands in the world.

Options

Pitcairn Island currently has a handful of registered accommodation providers offering guests a range of home stay and private accommodation. You can enjoy the full Pitcairn home stay experience - sharing all meals and amenities in the home of a local family or you can opt for a semi private chalet, or studio unit - with optional shared meals, or an entirely private 2 or 3 bedroom bungalow or chalet rental. Whatever your choice you can rest assured your hosts will take good care of you and your stay will be the most memorable holiday experience of your life.

Rates & Inclusions

Accommodation rates range from 150 - 200 € per person/ per day, depending on type, facilities and location. Many hosts offer weekly and monthly rates for long term visitors. Home stay accommodation rates cover full board, transfers, all meals and laundry. Rates are charged on a per person/ per day basis, this being due to passenger vessels leaving in the late afternoon. A typical stay will therefore be quoted by the day. Wi-Fi is included.

Additional Services

Activities, and guided walking or quad bike and vehicle tours can also be arranged with your hosts. Generally, You can pay for your Pitcairn accommodation when you book and pay for your berth on the passenger ship. The Local Treasury Office provides credit card facilities - so you can draw cash as required.

Homestay Listings

Pitcairn's accommodation providers always go that extra mile to make sure your stay on one of the most remote islands in the world is unforgettable.

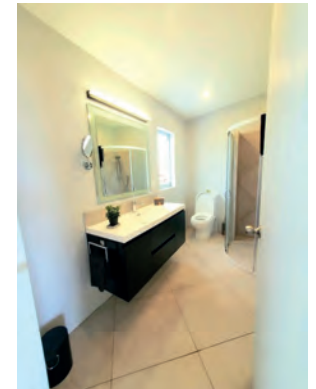
Little Flower Home Stay Listing - 180€ per person per day - Solo rate | 150€ per person per day - Couples rate

Private, newly built, studio unit situated at the top of the island on the Big Flower property. Ideal for short or long term visitors wanting a happy balance between self-reliance and the company of their hosts during their stay. At 36 sqm, Little Flower is built for the sunset. It's west facing private deck overlooks Isaac's Valley, from Highest Point to Gannets Ridge and Christians Cave. Guided walking tours, complimentary beverages and transfers are included. You're welcome to help yourself to Big Flower's seasonal garden produce. Your hosts, Heather and Kerry, can pre-stock your fridge and pantry, to order, prior to your arrival or you can visit the General Store and purchase whatever you need in your own time. If you like, you can also share occasional pre-arranged meals at Big Flower with your hosts. We're happy to mix things up to meet your needs. Please Note: Purchased-to-order grocery costs & vehicle tours will be added to your final invoice. No booking deposit required.



Amenities:

- 1 Queen Bed (or twin share by arrangement)
- Separate Bathroom & Walk in Shower
- Washing Machine / Dryer
- Modern Open-plan Kitchen
- All bedding and Linen
- Microwave, Gas Hob and Air Fryer
- Short-term internet Included, Smart TV
- Transfers & Guided Walking Tours Included
- Guided Quade Bike Tours by Arrangement
- Smokers OK outside only.



FLATLAND Self-contained 1 bedroom unit

200€ per person per day

A warm family atmosphere and the choice of blissful alone time.

Join us for family dinners and get to know us and our Island or take things at your own pace - Breakfast, lunch and dinner included or can provide provisions for self cooked meals.

Guided tours, fishing trips or just ideas to make your stay more exciting are just a question away!

Amenities:

- Self Contained One Bedroom Unit
- Modern Bathroom with large walk in shower
- 1 Bedroom with a Queen Size Bed
- Kitchenette with Gas Stove, Fridge, Kettle, Toaster and Microwave & Dining Suite
- Telephone & Wi-Fi by arrangement
- Sitting area with a 40" LED TV with USB
- Smokers OK outside
- Shaded, North facing balcony with panoramic ocean views
- Full laundry service provided, or you can use your own private washing machine for self service
- Breakfast, lunch and dinner included or can provide provisions for self cooked meals.
- Mosquito Screens on all windows and doors



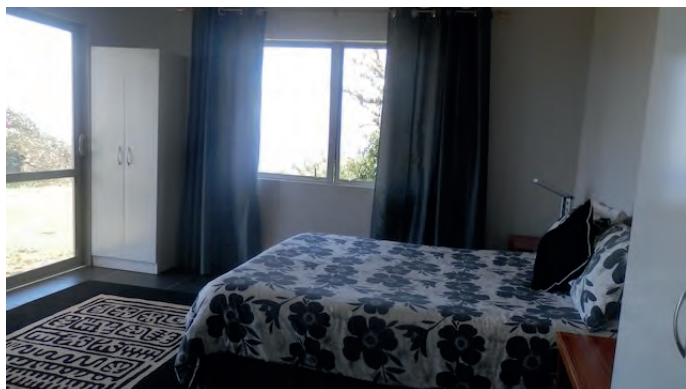
Stay with Heather & Kerry Young at Big Flower - Full Home Stay Accommodation 200€ per person per day

Situated at the top of the island this modern, north facing, comfortable 1 bedroom homestay showcases the very best of Pitcairn. Stunning views, unbelievable tranquility, warm hospitality, fresh garden produce and great cuisine. You'll enjoy Pitcairn from the top of the hill - a stone's throw from many of the island's natural attractions and, in season, you can watch migrating hump back whales, frolic in the ocean far below. Take it all in from the comfort of your deck chair and enjoy the bounty of Big Flower. Complimentary transfers and dinner drinks included. Do contact us for more information.



Amenities:

- Ocean View
- 1 double or twin share with private bathroom
- Modern kitchen with open plan Living
- Expansive ocean views
- Guided tours and transfers included
- Wi-fi Included
- Smokers OK outside



**Stay with Darralyn Griffiths - Down Alwyn's -
125€ per person per day**

Down Alwyn's relaxed, friendly and comfortable atmosphere provides the perfect home base for your Pitcairn Island stay. You'll be well cared for - Darralyn's great home cooking makes the most of local and international ingredients and you'll have plenty of opportunities to do your own things or to join in local activities. Close to the General Store, Church, Museum & Post Office.

Amenities:

- 1 Queen Bed
- Private En-Suite Bathroom
- Wi-Fi Included
- All meals, laundry & transfers included
- Smokers OK outside



Stay with Steve & Olive Christian at Big Fence Full Home Stay Accommodation 200€ per person per day

When you stay at Big Fence you'll live like local - experiencing the real day to day rhythm of life on Pitcairn. You'll pick produce from our gardens and fruit trees, catch your own fresh fish for your dinner, feed the goats, swim down the landing, have a laugh and get to know us. At Big Fence we're all about warm friendship, great food and real Pitcairn hospitality. Big Fence is situated at the top of the Hill of Difficulty, just a 5-minute walk to the town square. Transfers, all meals, laundry & complimentary dinner drinks are included. All bookings include an off-site sunset dinner at one of Pitcairn's beautiful scenic locations. At Big Fence our home is your home.



Amenities:

- Large family home
- Ocean View
- 2 double rooms with private ensuites
- 2 double rooms with a shared bathroom.
- Eco-friendly 24/7 Solar Power
- Telephone & Free 24/7 Unlimited Wi-Fi
- 110 & 120volt electricity also available
- Guest cash bar available
- Smokers OK outside
- Island tours and excursions, fishing or diving trips by arrangement.
- Gas fired hot water



Stay with Brenda & Mike Christian Just out of Adamstown - At Pommy Ridge 150€ per person per day

Our Relaxed, friendly and fun family atmosphere means that Pommy Ridge guests feel right at home and one of the family. We're not far from Adamstown and you'll have plenty of opportunity to kick back and make the most of everything Pitcairn has to offer. Easy meals, good company and an ocean view to die for will make your Pitcairn Island Stay truly Memorable.

Amenities:

- 3 twin / double bedrooms available
- Transfers included & tours by arrangement
- All meals & laundry included
- Fully Tiled Guest Bathroom with large walk in shower
- Wi-Fi Included
- Complimentary Dinner Drinks included

